

Alle Übungen können für das Üben zu Hause oder für den Unterricht ausgedruckt werden.

Das Vom-Blatt-Spiel ist äußerst wichtig. Es ist wie beim Vom-Blatt-Lesen: Je besser man lesen kann, desto mehr Musik kann man spielen und neue Stücke erlernen.

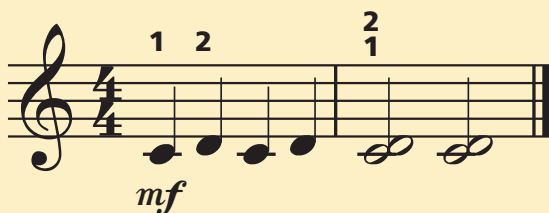
Kontrollliste:

- Welche Vorzeichen und Schlüssel gibt es? (♩ oder ♭)
- Wie ist die Taktangabe?
- Wie ist die Dynamik?
- Mit welchen Fingersätzen beginnt das Stück?
- Klopfe den Rhythmus und zähle laut dazu.
- Erkenne die Noten so schnell wie möglich.
- Spieler jede Übung 5 Mal am Tag.
- Spieler jede Übung auswendig.

Tipps zum Üben:

1. Fühle beim Spielen stets den Puls- oder Grundschlag (Metronom ♩ = 60–80).
2. Zähle immer 2 Takte laut vor.
3. Niemals unterbrechen – auch wenn mal ein Fehler passiert. Spiele immer gleichmäßig weiter.
4. Schau immer voraus, mindestens bis zur nächsten Note.
5. Richte deine Augen immer aufs Notenblatt.
6. Erkenne wiederkehrende Motive.

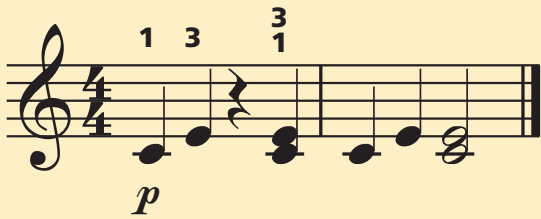
Vom-Blatt-Spiel 1 Klavierschule 2, S. 11



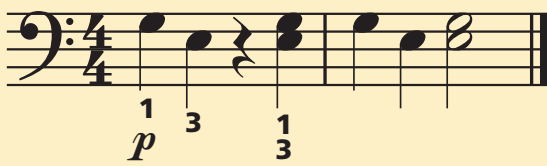
Vom-Blatt-Spiel 2 Klavierschule 2, S. 11



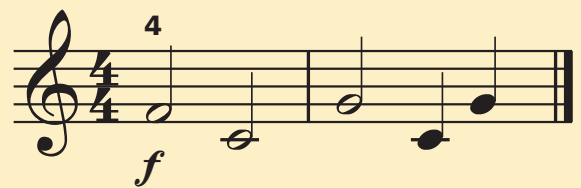
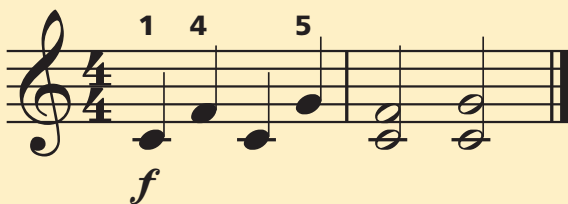
Vom-Blatt-Spiel 3 Klavierschule 2, S. 11



Vom-Blatt-Spiel 4 Klavierschule 2, S. 11



Vom-Blatt-Spiel 5 Klavierschule 2, S. 11



Vom-Blatt-Spiel 6 Klavierschule 2, S. 11

1 4 5
f

1 5
f

Vom-Blatt-Spiel 7 Klavierschule 2, S. 22

5 1
mf

2

Vom-Blatt-Spiel 8 Klavierschule 2, S. 23

3 1
mf

5 4

Vom-Blatt-Spiel 9 Klavierschule 2, S.26

Musical score for Vom-Blatt-Spiel 9, measures 1-4. The piece is in 3/4 time and marked *mp*. The first staff (treble clef) has rests in measures 1 and 2, followed by a quarter note G4 in measure 3 and a dotted quarter note G4 in measure 4. The second staff (bass clef) has a quarter note G2 in measure 1, a quarter note A2 in measure 2, a quarter note B2 in measure 3, and a quarter note C3 in measure 4. Fingerings are indicated: '1' under the first bass note and '2' above the first treble note.

Musical score for Vom-Blatt-Spiel 9, measures 5-8. The first staff (treble clef) has a quarter note G4 in measure 5, a quarter note A4 in measure 6, a quarter note B4 in measure 7, and a dotted quarter note G4 in measure 8. The second staff (bass clef) has rests in measures 5 and 6, a quarter note G2 in measure 7, and a quarter note A2 in measure 8. A fingering of '4' is shown under the first bass note of measure 7.

Vom-Blatt-Spiel 10 Klavierschule 2, S.30

Musical score for Vom-Blatt-Spiel 10, measures 1-4. The piece is in 2/4 time and marked *mf*. The first staff (treble clef) has a quarter note G4 (fingered 4), a quarter note A4 (fingered 2), a quarter note B4 (fingered 3), and a quarter note C5 (fingered 1). The second staff (bass clef) has a quarter note G2 (fingered 1) in measure 1, a quarter note A2 in measure 2, a quarter note B2 in measure 3, and a quarter note C3 in measure 4. A fingering of '4' is shown under the first bass note of measure 3.

Vom-Blatt-Spiel 11 Klavierschule 2, S. 34

Musical score for Vom-Blatt-Spiel 11 in 4/4 time. The piece is in G major. The right hand features a triplet of eighth notes in the first two measures, followed by a triplet of quarter notes in the third measure. The left hand plays a simple bass line with quarter notes. The dynamic marking is *p* (piano). Fingering numbers 1, 3, 1, 3, 2 are indicated above the notes.

Vom-Blatt-Spiel 12 Klavierschule 2, S. 41

Musical score for Vom-Blatt-Spiel 12 in 4/4 time. The piece is in G major. The right hand has a melodic line with eighth and quarter notes. The left hand has a bass line with quarter notes. The dynamic markings are *p* (piano), *mf* (mezzo-forte), and *p* (piano). Fingering numbers 1, 3, 4, 2 are indicated above the notes in the right hand, and 3, 1, 5, 4, 2, 1 are indicated below the notes in the left hand.

Vom-Blatt-Spiel 13 Klavierschule 2, S. 48

Musical score for Vom-Blatt-Spiel 13 in 3/4 time. The piece is in G major. The right hand has a melodic line with quarter notes. The left hand has a bass line with quarter notes. The dynamic marking is *mp* (mezzo-piano). A triplet of eighth notes is indicated above the first note in the right hand. A slur is placed over the first two notes in the right hand. Fingering number 5 is indicated below the first note in the left hand.

Vom-Blatt-Spiel 14 Klavierschule 2, S. 53

Musical score for Vom-Blatt-Spiel 14, Klavierschule 2, S. 53. The piece is in 4/4 time. The first measure features a treble clef with notes G4, A4, and B4, marked *mf*. The second measure features a bass clef with notes G3, A3, and B3, marked *f*. Fingerings are indicated: 3 and 2 for the first measure, and 1 for the second measure. The bass clef has fingerings 1, 2, 3, 4, and 5 for its notes.

Vom-Blatt-Spiel 15 Klavierschule 2, S. 60

Musical score for Vom-Blatt-Spiel 15, Klavierschule 2, S. 60. The piece is in 3/4 time. The first measure features a treble clef with notes G4, A4, and B4, marked *p*. The second measure features a bass clef with notes G3, A3, and B3. Fingerings are indicated: 3 for the first measure, and 1 and 2 for the second measure. The bass clef has fingerings 5, 3, and 2 for its notes.

Vom-Blatt-Spiel 16 Klavierschule 2, S. 65

Musical score for Vom-Blatt-Spiel 16, Klavierschule 2, S. 65. The piece is in 4/4 time. The first measure features a treble clef with notes G4, A4, and B4, marked *mf*. The second measure features a bass clef with notes G3, A3, and B3, marked *p*. Fingerings are indicated: 3 and 2 for the first measure, and 1 for the second measure. The bass clef has fingerings 5 and 3 for its notes.